

ISLAND INSIGHTS

GOLF

MAUI IS A GOLFER'S PARADISE. SINCE WE DO NOT PLAY GOLF, WE WILL NOT ATTEMPT TO PROVIDE INFORMATION ABOUT SPECIFIC COURSES. HOWEVER, THERE ARE MANY EXCELLENT GOLF COURSES ON THE ISLAND THAT ARE CLOSE TO MAUI SANDS IN KAPALUA AND KAA NAPALI AS WELL AS, IN THE KIHEI AREA.

BELOW IS A LIST OF THE GOLF COURSES ON MAUI THAT WAS DATED 2007. YOU WILL NEED TO CHECK ON ANY CHANGES SINCE THAT TIME.

MAUI COUNTY GOLF COURSES					
ALL COURSES ARE 18 HOLES, UNLESS OTHERWISE NOTED					
Public/Private/Resort	Greens Fee/ Twilight	Par	Yardage	Year Opened	Architect
<u>THE DUNES AT MAUI LANI</u> , 1333 Maui Lani Parkway, Kahului, HI 96732. (808) 873-0422					
Private open to public	\$120 / \$75	72	6,800	1999	Robin Nelson
<u>ELLEAIR GOLF COURSE</u> , 1345 Pi'ilani Highway, Kihei, HI 96753, (808) 874-0777					
Private open to public	\$105 / \$80	71	6,404	1991	W. J. Newis
<u>KA'ANAPALI NORTH COURSE</u> , 2290 Ka'anapali Highway, Ka'anapali Resort, Lahaina, HI 96761 (808) 661-3691 / 866-454-GOLF					
Resort open to public	\$180 / \$85	71	6,994	1962	Robert Trent Jones, Sr.
<u>KA'ANAPALI SOUTH COURSE</u> , 2290 Ka'anapali Highway, Ka'anapali Resort, Lahaina, HI 96761 (808) 661-3691 / 866-454-GOLF					
Resort open to public	\$140 / \$75	71	6,555	1967	
(redesigned 1976)					Arthur Jack Snyder

Public/Private/Resort	Greens Fee/ Twilight	Par	Yardage	Year Opened	Architect
<u>KAHILI GOLF COURSE</u> , 2500 Honoapi'ilani Highway, Waikapu, HI 96793, (808) 242-4653					
Private open to public	\$100 / \$75	72	6,570	1991 (redesigned 2006)	Robin Nelson & Rodney Wright
Residents (valid HI Drivers License ONLY)	\$45 / 38				
<u>KAPALUA BAY COURSE</u> , 300 Kapalua Drive, Lahaina, HI 96761, (808) 669-8044 / 877-527-2582					
Resort open to public	\$210 / \$100	72	6,600	1975	Arnold Palmer & Francis Duane
<u>KAPALUA PLANTATION COURSE</u> , 300 Kapalua Drive, Lahaina, HI 96761, (808) 669-8044 / 877-527-2582					
Resort open to public	\$295 / 125	73	7,263	1975	Ben Crenshaw & Bill Coore
<u>KAPALUA VILLAGE COURSE</u> , 300 Kapalua Drive, Lahaina, HI 96761 (808) 669-8044 / 877-527-2582					
Resort open to public	\$195 / \$90	72	6,001	1980	Arnold Palmer
<u>KING KAMEHAMEHA GOLF COURSE</u> , 2500 Honoapi'ilani Highway, Wailuku, HI 96793					
Private Course, Members Only		72	7,105	1991	Ted Robinson
(To Open 2006)				(redesigned 2006)	Ted Robinson, Jr.
<u>MAKENA NORTH COURSE</u> , 5415 Makena Alanui, Kihei, HI 96753, (808) 879-3344					
Resort open to public	\$160 / \$135	72	6,914	1993	Robert Trent Jones, Jr.
<u>MAKENA SOUTH COURSE</u> , 5415 Makena Alanui, Kihei, HI 96753, (808) 879-3344					
Resort open to public	\$160 / \$135	72	6,739	1981	Robert Trent Jones, Jr.
<u>MAUI COUNTRY CLUB</u> , 48 Nohohe Place, Sprecklesville, HI 96779, (808) 877-0616					
Private, Open to Public on non-holiday Mondays	\$75 (9 holes)	74	6,549	1927	Alex Bell & William McEwan
<u>PUKALANI COUNTRY CLUB</u> , 360 Pukalani Street, Pukalani, HI 96768, (808) 572-1314					
Private open to public	\$78 / \$63	72	6,882	1980	Robert E. Baldock Sr. & Jr.
<u>WAIIEHU MUNICIPAL GOLF COURSE</u> , 200 Halewaihau, Wailuku, HI 96793, (808) 243-7400					
Public	\$40 weekdays	72	6,330	1930	
	\$45 weekends & holidays				
<u>WAIIEA BLUE COURSE</u> , 120 Kaukahi Street, Wailea, HI 96753, (808) 875-5155					
Resort open to public	\$160 / \$105	72	6,758	1972	Arthur Jack Snyder
<u>WAIIEA EMERALD COURSE</u> , 100 Wailea Golf Club Drive, Wailea, HI 96753, (808) 875-5111					
Resort open to public	\$190	72	6,825	1994	Robert Trent Jones, Jr.
<u>WAIIEA GOLD COURSE</u> , 100 Wailea Golf Club Drive, Wailea, HI 96753, (808) 875-5111					
Resort open to public	\$190	72	7,070	1993	Robert Trent Jones, Jr.

DINING

RESTAURANTS AND FINE DINING ABOUND ON MAUI WITH MANY RESTAURANTS CLOSE IN THE KAA NAPALI, LAHAINA AND KAPALUA AREAS. IN THE CONDO, THERE SHOULD BE SEVERAL MAGAZINES THAT LIST DINING AND RESTAURANTS, OR YOU MAY JUST PICK ONE UP AS YOU WALK AROUND LAHAINA OR THE CANNERY MALL.

ON THE MAIN HIGHWAY COMING FROM THE AIRPORT BEFORE YOU COME TO LAHAINA, YOU PASSED AN AREA CALLED *OLOWALU*. THERE IS A LOCALS MARKET AND A FRENCH RESTAURANT CALLED *CHEZ PAUL*. WE HAVE NEVER EATEN THERE, BUT HEAR THE FINE DINING AND FOOD ARE WONDERFUL. THE RESTAURANT HAS BEEN THERE FOR YEARS.



IF YOU WISH TO TRAVEL A BIT FARTHER DOWN THE MAIN ROAD, YOU MIGHT ENJOY A SEAFOOD OR FISH MEAL AT BUZZ'S WHARF IN THE MAALEA HARBOR.

ANOTHER OPTION IS TO DRIVE INTO THE KIHEI AREA WHICH TAKES ABOUT 40 MINUTES FROM THE CONDO.



THERE IS A WIDE RANGE OF RESTAURANTS AND FINE DINING IN MANY OF THE LARGE HOTELS.

ON THE ROAD TO HANA, JUST BEFORE YOU COME TO HOOKIPA, YOU WILL PASS THE BEST FISH RESTAURANT ON THE ISLAND. NOW THIS IS ARGUABLE, BUT WE THINK THAT MAMA'S FISH HOUSE SERVES THE



BEST FISH ON THE ISLAND. FOR LUNCH, YOU ARE WITHOUT RESERVATIONS, BUT FOR DINNER, RESERVATIONS ARE A MUST.

WONDERFUL VIEWS WHILE YOU EAT. IF YOU WANT TO DRIVE A BIT FARTHER YOU CAN TAKE IN PAIA AND HOOKIPA.

SUPERMARKETS/DRUGSTORE

ON THE AIRPORT SIDE OF MAUI YOU WILL FIND STORES LIKE *COSTCO, BARNES AND NOBLE, SEARS, MACY'S, KMART, WALMART, LONGS, SPORTS MART, OFFICE MAX, OLD NAVY, LOWE'S AND HOME DEPOT.*

THE CLOSEST SUPERMARKET IS THE *STAR MARKET* WHICH IS IN THE SHOPPING CENTER AT THE LEFT TURN YOU MADE OFF THE MAIN HIGHWAY INTO THE HONOKAWAI AREA TO MAUI SANDS. IF YOU FEEL LIKE WALKING, IT WILL TAKE ABOUT 5 MINUTES TO GET THERE. THERE IS ALSO A MOVIE RENTAL STORE IN THAT SHOPPING CENTER.



ON THE WAY TO THE STAR MARKET, YOU PASS THE *ABC STORE* WHICH HAS ITEMS CARRIED AT ANY CONVENIENCE STORE.

IF YOU CONTINUE DOWN LOWER HONOAPIILANI ROAD (TO THE LEFT OF MAUI SANDS WHEN FACING THE ROAD) TWO BLOCKS DOWN, YOU WILL COME TO A PARK (LEFT SIDE OF THE STREET).



ACROSS FROM THE PARK IS A *FARMERS MARKET* THAT OFFERS LOCALLY GROWN PRODUCE OPEN FROM 7-11 A.M. MONDAY, WEDNESDAY AND FRIDAY. THERE IS ALSO A COFFEE ROASTER THAT SERVES A NICE SELECTION OF *SPECIALITY COFFEES*.

CONTINUING DOWN LOWER HONOAPIILANI ROAD, THERE IS ANOTHER SUPERMARKET CALLED *NAPILI MARKET*. IT IS A RIGHT TURN ON NAPILIHU, ONE LONG BLOCK AND UP A HILL BACK TOWARD THE MAIN HIGHWAY. THERE IS A LARGE POPULAR SAFEWAY MARKET THAT YOU PASSED ON THE MAIN HIGHWAY WHEN YOU DROVE TO MAUI SANDS. THE SAFEWAY MARKET IS IN THE LAHAINA CANNERY MALL.



FROM MAUI SANDS, THE CANNERY MALL IS ABOUT THREE MILES AFTER THE ENTRANCE TO KAA NAPALI BEACH RESORT AREA. AT



THE OPPOSITE END OF THIS MALL ARE A LONGS DRUGSTORE, A GNC, RESTAURANT, COFFEE SHOP, AND QUITE A FEW SPECIALTY SHOPS.

BEACHES



MAUI SANDS HAS A WONDERFUL LAGOON FOR SWIMMING. THERE ARE TWO REEFS, ONE JUST PAST THE BOTTOM OF THE STAIRS AT THE BACK OF OUR CONDO AND THEN THE REEF FARTHER OUT WHERE THE WAVES BREAK. IN BETWEEN IS A WONDERFUL SWIMMING AREA—NOT MUCH TO SEE FOR SNORKELERS IN THIS LAGOON AREA AND IT CAN GET QUITE ROUGH AT HIGH TIDE.

OUR SUGGESTION FOR SWIMMING IS TO GO DOWN THE STEPS IN FRONT OF THE CONDO (BE CAREFUL, THE ALGAE MAKES THEM SLIPPERY)



AND WALK TO THE LEFT. THE FRONT REEF ENDS JUST PAST MAUI SANDS AND YOU CAN ENTER THE WATER WITHOUT RISKING SLIPPING ON THE REEF.

YOU CAN ALSO ENJOY THE SANDY BEACH IN FRONT OF OUR NEIGHBOR TO THE LEFT, PAPAKEA RESORT OR PAKI MAUI ON THE RIGHT.

IF YOU WALK TO THE RIGHT AFTER YOU GO DOWN THE STAIRS, THERE IS ANOTHER BREAK IN THE FRONT REEF NEAR THE MIDDLE OF THE PAKI MAUI RESORT. AGAIN YOU CAN SAFELY ENTER THE LAGOON AND ENJOY A WONDERFUL SWIM OR A LEISURELY FLOAT.



IF YOU ARE LUCKY ENOUGH TO BE VISITING MAUI DURING THE MONTHS OF NOVEMBER THROUGH APRIL, YOU SHOULD BE ABLE TO SEE HUMPBACK WHALES THAT COME TO BEAR THEIR YOUNG AND FEED IN THE CHANNEL BETWEEN MAUI AND LANAI AND MOLOKAI. DURING THE PEAK MONTHS OF DECEMBER THROUGH MARCH YOU SHOULD SEE BREACHING WHALES FROM OUR PATIO.

THERE ARE GREAT VIEWS AT THE VISITOR'S TURNOUT AT THE TOP OF THE CLIFFS JUST PAST OLOWALU TO SEE WHALES IN SEASON AND THE OTHER ISLANDS INCLUDING THE MOLOKINI CRATER.



OKAY, WE WILL SHARE WITH YOU OUR BEST KEPT SECRET ABOUT THE



**FINEST SNORKELING ON MAUI!
JUST DRIVE BACK TO THE MAIN
HIGHWAY THE WAY YOU
ARRIVED PASSING THE STAR**

**MARKET. MAKE A RIGHT TURN
ONTO THE MAIN HIGHWAY, PROCEED TO THE
SECOND STOP LIGHT, AND MAKE A RIGHT
TURN. FOLLOW THE SHORT ROAD UNTIL IT
ENDS IN HALEKILI BEACH PARK, PARK THE
CAR, AND GET READY FOR THE EASIEST
ACCESS TO THE BEST SNORKELING ON
MAUI. SOMETIMES, THERE MAYBE A STRONG
SHOREBREAK, BUT 99% OF THE TIME, THE
AREA PROVIDES WONDERFUL SNORKELING.**

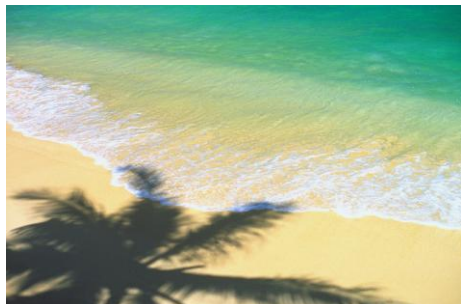
**IF YOU ARE STANDING ON THE GRASSY
LAWN AREA, TO THE RIGHT ARE SOME
NEWLY BUILT TIME-SHARE UNITS. THERE
ARE USUALLY A FEW TURTLES IN THE WATER
IN FRONT OF THE SECOND BUILDING ABOUT
30-50 YARDS OUT IN THE WATER.**

**THE TOWN OF LAHAINA IS FILLED WITH A
VARIETY OF RESTAURANTS, ART GALLERIES,
SOUVENIR SHOPS, TWO PIERS, AND
SPECTACULAR VIEWS. THERE ARE A FEW
BEACHES WHERE LOCALS CONGREGATE
AND WHERE YOU CAN LEARN TO SURF.**

STARTING AT MAUI SANDS, IF YOU TURN LEFT AND CONTINUE DOWN LOWER HONOAPIILANI ROAD THROUGH THE BEAUTIFUL TWISTS AND TURNS, YOU WILL PASS MANY SMALL BEACHES--SOME WITH FACILITIES AND SOME WHERE YOU JUST PARK BY THE SIDE OF THE ROAD. ABOUT FOUR MILES FROM MAUI SANDS, YOU WILL COME TO THE NAPILI KAI BEACH RESORT, KAPALUA BAY, AND THE KAPALUA RESORT.

THERE IS A VERY SMALL PARKING LOT IN BETWEEN THE TWO RESORTS. GO BEFORE 10 A.M. FOR THE BEST CHANCE FOR A PARKING SPOT IN THE PUBLIC LOT. OTHERWISE, PARK WITH THE OTHER CARS THAT YOU WILL SEE PARKED ON THE HILL ACROSS FROM NAPILI KAI RESORT.

THE PUBLIC PARKING LOT FOR KAPALUA



BAY IS JUST PAST NAPILI KAI RESORT AND THE ENTRANCE IS SHARED WITH NAPILI KAI RESORT. ONCE YOU HAVE PARKED, THERE IS A PUBLIC TOILET,

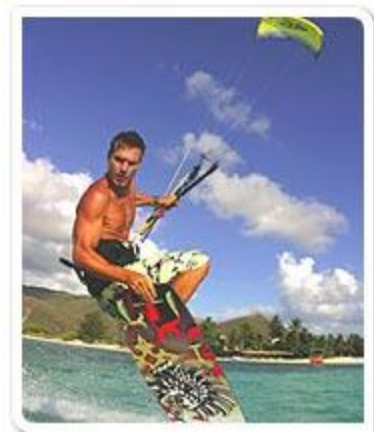
SHOWER AND DRINKING FOUNTAIN. FOLLOW THE STAIRS TO THE RIGHT TO BEAUTIFUL KAPALUA BAY.



OTHER POPULAR BEACHES ARE OFF THE MAIN HIGHWAY PAST KAPALUA BAY. ONE IS **FLEMING STATE BEACH**, BUT THERE ARE OTHERS WE ARE LESS FAMILIAR TO US.

ON THE OTHER SIDE OF THE OLOWALU MARKET AT **MILE MARKER 14**, THERE IS GREAT SNORKELING AND IT'S A POPULAR SPOT TO SPEND A FEW HOURS OR SPEND THE DAY.

KANAHA BEACH PARK LOCATED BEHIND THE RENTAL-CAR LOTS AT THE AIRPORT, IS A BEAUTIFUL WHITE-SAND BEACH. AT 11:00 A.M. THE BEACH OPENS FOR WINDSURFING AND KITESURFING. IT IS AMAZING TO WATCH. THERE ARE WINDSURFING & KITESURFING SHOPS NEAR KANAHA BEACH THAT OFFER LESSONS AND RENTAL EQUIPMENT.



IMPORTANT: ALL BEACHES ON MAUI ARE PUBLIC! YOU CANNOT BE DENIED THE USE OF ANY BEACH ON THE ISLAND AS LONG AS YOU ARE ABLE TO ACCESS THE BEACH WITHOUT GOING ON PRIVATE PROPERTY.

DAY TRIPS

KIHEI

KIHEI BEACHES HAVE MILES OF SUGARY SAND, MILES OF CONDOS AND BIG HOTELS, BUT THERE IS A WONDERFUL ENERGY IN THIS AREA OF MAUI.

KAMAOLE BEACH PARKS I, II, AND III ARE SAFER SWIMMING OPTIONS, AS WELL AS, BEACH VOLLEYBALL HOTSPOTS.

TAKE ADVANTAGE OF FREE VALET PARKING AT THE FOUR SEASONS RESORT, THEN SPRING FOR A DRINK INSIDE THE HOTEL, OR STROLL ALONG THE WAILEA BEACHWALK, A PUBLIC JOGGING/BIKE PATH THAT PROVIDES AN OCEANFRONT TOUR OF THE WAILEA RESORTS.

JAWZ TACOS STARTED AS A ROADSIDE TRUCK PARKED AT THE ENTRY TO MAKENA BEACH PARK, BUT BY POPULAR DEMAND SOON GREW TO INCLUDE AN AIR-CONDITIONED SURFER HANGOUT SERVING TACO SALADS BIG ENOUGH FOR TWO. PILE ON THE SAUCES AT THE FREE SALSA BAR, WHERE EACH TOPPING IS RATED FROM ONE TO FIVE, FIVE BEING SPICIEST.

MAKENA BEACH PARK

IS DIVIDED INTO **BIG BEACH**, POPULAR WITH FAMILIES, AND **LITTLE BEACH** (UP OVER THE CLIFFS AT THE NORTH END), A



STRETCH WITH AN OUTRAGEOUS, CLOTHING-DISCOURAGED SUNDAY-SUNSET DRUMCIRCLE THAT ATTRACTS MORE THAN A HUNDRED REVELERS. IT'S A HAPPY, MOSTLY INNOCENT GATHERING THE AUTHORITIES KINDLY IGNORE. ***BEWARE: BOTH BIG AND LITTLE BEACHES HAVE DANGEROUS CURRENTS AND SHORE BREAKS.***

FOR A TRADITIONAL "PLATE LUNCH"--AND ONE OF THE FEW PLACES OUTSIDE OF A LUAU WHERE YOU CAN TRY KALUA PORK, PORK LAULAU (STEAMED IN TARO LEAVES),



AND LOMI LOMI SALMON--STOP BY DA KITCHEN. IT IS IN A STRIP MALL, SO GET YOUR DINNER TO GO, DRIVE TO ONE OF THE BEACHES ACROSS SOUTH KIHEI ROAD

(KAMAOLE BEACH PARKS I, II, OR III), AND EAT WATCHING THE SUNSET.

FROM 10 P.M. TO 1 A.M. ON THURSDAYS, FRIDAYS, AND SATURDAYS, ONE OF HAWAII'S TOP CHEFS, D.K. KODAMA, SELLS HALF-PRICE SUSHI SPECIALS AT SANSEI. YOU EAT WHILE OTHERS SING KARAOKE.

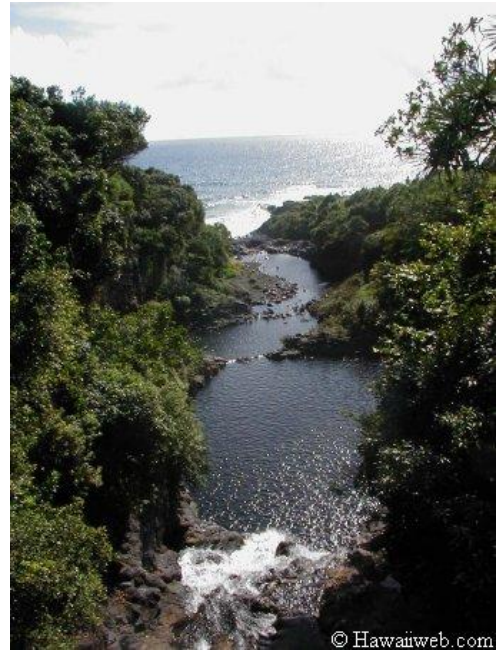
WILLIE K--IMAGINE A HAWAIIAN LENNY KRAVITZ PLUS A HUNDRED POUNDS--PLAYS MONDAYS AT HAPA'S (THERE IS COVER CHARGE THOSE NIGHTS). YOU NEVER KNOW WHO'LL SHOW UP: BOTH PRINCE AND JANET JACKSON HAVE JAMMED WITH HIM. ALSO, THE LARGE YOUNG IRISH POPULATION ON MAUI (THEY WORK AT THE RESORTS) MAKES THE LOCAL IRISH PUB, MULLIGAN'S ON THE BLUE, A LIVELY WATERING HOLE.



HANA AREA

HANA AND THE SEVEN SACRED POOLS AT OHEO

GULCH IS AN ALL DAY TRIP—START EARLY—LEAVE NO LATER THAN 9:00 A.M. IT IS A BEAUTIFUL DRIVE ALONG THE NORTHEAST SHORE WHERE RAINFALL IS PLENTIFUL. THE AREA IS LUSH AND TROPICAL. BRING BATHING SUITS IF YOU WANT TO SWIM IN THE FRESH WATER POOLS.



THE DRIVE IS ALONG A TWISTING CURVING ROAD WHERE YOU WILL PASS FARMS, BLACK SAND BEACHES, AND COZY HILLSIDE



HOMES. IN THE RAINY SEASON, THERE ARE WATERFALLS EVERYWHERE—ONE AFTER EVERY TURN. IN THE DRY SEASON, THERE ARE STILL A FEW WATERFALLS TO ENJOY. AFTER HANA, YOU COME TO OHEO

GULCH, ALSO CALLED "THE SEVEN SACRED POOLS." THE SURROUNDING AREA IS QUITE BEAUTIFUL.

THE TOWN OF HANA IS REACHED AFTER A TWO-HOUR DRIVE THAT SEPARATES LUSH TROPICAL HANA FROM THE REST OF THE ISLAND—THE DRIVE HAS PROTECTED HANA FROM RAPID DEVELOPMENT. HANA HAS THE LARGEST POPULATION OF BLOOD HAWAIIANS OUTSIDE OF MOLOKAI. ALMOST ALL ARE EMPLOYED BY THE HANA RANCH.

HAMO A BEACH HAS SOMETHING FOR ALL--A



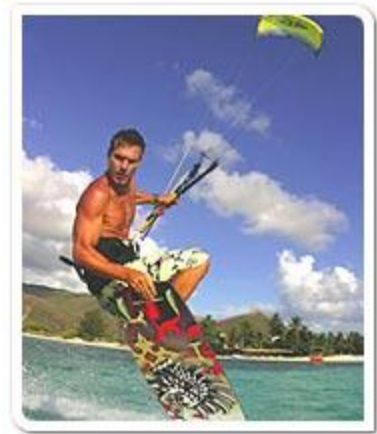
WIDE BLACK-SAND BEACH, TWO BREAKS FOR SURFING (EXPERIENCED RIDERS ONLY), AND ONE OF THE BEST BREAKS FOR BODYBOARDING AND BODYSURFING ON MAUI

YOU MIGHT VISIT THE KAHANU GARDEN, SITE OF A MASSIVE AND WELL-PRESERVED ANCIENT HAWAIIAN TEMPLE KNOWN AS PIILANIHALE HEIAU.

HASEGAWA GENERAL STORE, ONE OF THE ISLAND'S OLDEST PLANTATION STORES, STOCKS DUSTY, OFFBEAT SOUVENIRS, SUCH AS AN INSTANT IMMERSION HAWAIIAN LANGUAGE CD; NONI TEA, A HAWAIIAN CURE-ALL; AND COCONUT CANDY MADE IN HANA.

KANAHA BEACH

IF YOU WANT TO ENJOY, AS A SPECTATOR OR PARTICIPANT, THE SPORTS OF WINDSURFING OR KITESURFING, YOU WILL WANT TO GO TO **KANAHA BEACH** WHICH IS VERY CLOSE TO THE KAHULUI AIRPORT.



THEY GIVE LESSONS AT KANAHA, BUT IT'S WORTH A WATCH TO SEE THE TALENTED SPORTSMEN AND SPORTSWOMEN AT THEIR BEST.

BALDWIN BEACH PARK

A LOCALS BEACH, BALDWIN IS PASSED THE AIRPORT ON THE ROAD TO HANA JUST OUTSIDE OF PAIA. IT HAS A LARGE GREEN LAWN AREA FOR SPORTS, AND SHADE TREES ALONG A NICE SANDY BEACH WHICH PROVIDES A NICE PLACE FOR A DIP.



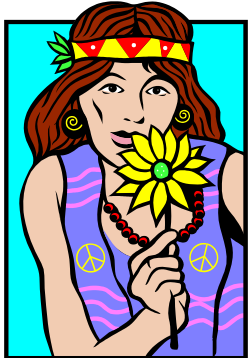
HOOKIPA BEACH

ANOTHER PLACE TO VIEW THE WINDSURFING IS AT **HOOKIPA BEACH** WHICH IS JUST PAST ***PAIA*** ON THE ROAD TO HANA.

PAIA

PAIA IS A BIT OF A BLAST FROM THE PAST—KIND OF A TRIP BACK TO THE 60s--A CHARMING TOWN THAT HAS ARTISTS AND GALLERIES, RESTAURANTS, AND THE HEADQUARTERS OF THE MAUI DOWNHILL BICYCLE COMPANY.

ATHLETES FROM SOUTH AMERICA AND EUROPE HAVE FLOCKED TO MAUI'S NORTH SHORE, SO DON'T BE SURPRISED IF YOU



OVERHEAR CONVERSATIONS IN PORTUGUESE, SPANISH, AND FRENCH. BOTH PAIA AND HAIKU IN UPCOUNTRY HAVE HIPPIE ROOTS BUT MANY NEWCOMERS TO CREATE A GLOBAL VILLAGE WITH HEARTY, HEALTHY RESTAURANTS AND EVERYTHING FROM TATTOO PARLORS TO BOUTIQUES SELLING \$200 BIKINIS.

ARGENTINEAN DESIGNER AND HAIKU RESIDENT TAMARA CATZ HAS A BOUTIQUE IN PAIA WHERE DRESSES AVERAGE AROUND \$180, BUT THERE ARE WORTHWHILE SEASONAL SALES IN THE STORE AND ON HER WEBSITE.

THE PAIA FISH MARKET, A CASUAL PLACE TO SEE AND BE SEEN, OFFERS A REASONABLY PRICED, TASTY, SATISFYING MAHI TACO PLATE WITH HOME FRIES, COLESLAW, OR CAJUN RICE.

CHARLEY'S IS A HONKY-TONK JOINT DEDICATED TO PATRON SAINT AND LOCAL RESIDENT WILLIE NELSON. ON OCCASION, BIG WILLIE DOES SING HERE, THOUGH IT'S GENERALLY ONLY ANNOUNCED THE DAY BEFORE--AND TICKETS GO IN AN HOUR.



THE WINTER EVENT, DRAWING HUNDREDS OF SPECTATORS INTO THE PINEAPPLE FIELDS TO WATCH WITH BINOCULARS, IS TOW-IN SURFING AT JAWS--A 40-FOOT-PLUS



WAVE MADE FAMOUS BY EXTREME SURFER LAIRD HAMILTON AND MOVIES LIKE *RIDING GIANTS* AND *STEP INTO LIQUID*. BEGINNERS AND

EXPERIENCED SURFERS ALIKE RAVE ABOUT FEELING SAFE WITH LESSONS FROM

IDENTICAL TWINS TIDE AND KIVA RIVERS, WHO OWN RIVERS TO THE SEA. THE WAVES AT HOOKIPA BEACH PARK ARE A BIT MORE MANAGEABLE THAN JAWS (AT LEAST FROM APRIL TO OCTOBER).

YOGA AFICIONADOS MAY WANT TO POSE WITH FORMER HEWLETT-PACKARD EXECUTIVE JENNIFER LYNN AT STUDIO MAUI, A STATE-OF-THE-ART YOGA STUDIO THAT CAN ACCOMMODATE UP TO 110 PARTICIPANTS. LOCALS CAN BUY TWO CLASSES AND GET ONE FREE--OTHERWISE, IT'S \$12 A CLASS.

COLLEEN'S IS A CAVERNOUS CAFÉ IN THE SAME COMPLEX AS STUDIO MAUI IS POPULAR FOR POST-YOGA CHAT-AND-CHAI.

MAUI DOWNHILL

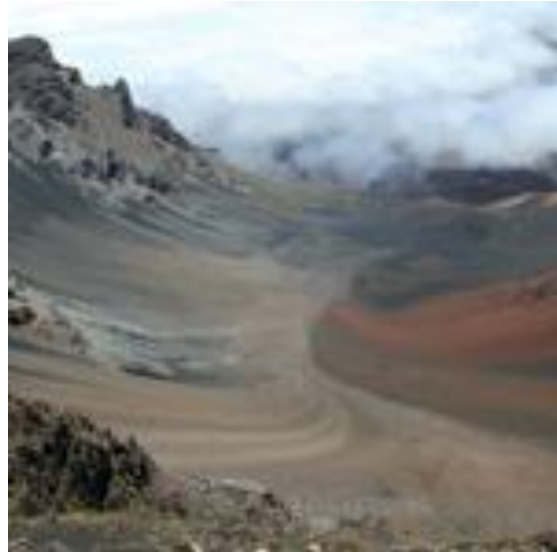
OFFERS DIFFERENT BICYCLE TRIPS INCLUDING ONE WHERE THEY DRIVE YOU UP TO THE TOP OF THE HALEAKALA CRATER FOR THE SUNRISE, AND THEN YOU BIKE DOWN THE CRATER AT YOUR OWN PACE.



UPCOUNTRY

HALEAKALA AND UPCOUNTRY MAUI

SURPRISE MANY PEOPLE. THERE ARE COOLER TEMPERATURES, MISTY GREEN ROLLING HILLS, AND SMALL FARMS—A STARK CONTRAST WITH THE EERIE MOONSCAPE OF MOUNT HALEAKALA THE VOLCANO WITH A SUMMIT AT 10,023 FEET.



THE WINDING ROAD TO HALEAKALA NATIONAL PARK IS LEGENDARY AS YOU DRIVE IN AND OUT OF THE CLOUDS, BUT IT'S THE SUMMIT'S MARS-LIKE CRATER THAT WILL AMAZE YOU. DRESS WARMLY IF YOU PLAN TO BE THERE FOR SUNRISE OR SUNSET--TEMPERATURES DROP INTO THE LOW 30S. THE HIGH ELEVATION MEANS THAT THE FREE TASTING AT TEDESCHI VINEYARDS CAN GO TO YOUR HEAD; BE SURE TO DESIGNATE A DRIVER.

YOU WILL PASS THROUGH BEAUTIFUL AREAS WITH SPECTACULAR VIEWS. ONCE

ON THE TOP OF HALEAKALA, THERE ARE LOTS OF HIKING TRAILS—STOP AT THE RANGERS POST FOR MAPS OR USE THE MAP THEY GIVE YOU WHEN YOU ENTER THE PARK. IF YOU ARE PARTICULARLY FORTUNATE AND ARRIVE AT THE TOP OF THE MOUNTAIN ON A CLEAR DAY, YOU CAN SEE UP TO FIVE ISLANDS—MOLOKAI, LANAI, THE BIG ISLAND HAWAII, KAHOO LAWE, AND OAHU. IT IS QUITE A SIGHT.



IF YOU FEEL LIKE GETTING UP REALLY EARLY LIKE 3 A.M. TO MAKE THE SUNRISE ON *HALEAKALA*, IT IS SPECTACULAR. IF YOU ARE LIKE US AND THINK YOU MIGHT WANT TO LEAVE LATER AND CATCH THE MOUNTAIN AT HIGH NOON, IT IS A PLEASANT TRIP UP THE MOUNTAIN.

KOMODA STORE & BAKERY SELLS FRESH PASTRIES, LIKE CHOCOLATE CREAM PUFFS SPRINKLED WITH WHITE SUGAR. HALIIMAILE GENERAL STORE PROVIDES REGIONAL CUISINE, SUCH AS A SASHIMI NAPOLEON AT REASONABLE PRICES.

CHING STORE, FOUNDED IN 1939, IS ONE OF MAUI'S LAST FAMILY-OWNED PLANTATION GENERAL STORES--MEANING IT WAS OPEN WHEN PLANTATIONS WERE THE MAINSTAY OF THE ECONOMY. IT HAS A FULL SHELF OF CANS OF SPAM (HAWAII CONSUMES AN EXTRAORDINARY AMOUNT OF THE PORK PRODUCT). RODEO GENERAL STORE IS A GOOD PLACE TO PICK UP LOCAL PRODUCE, INCLUDING STRONG KULA-GROWN COFFEE.

THE *UPCOUNTRY PROTEA FARM* IS A



PRIVATE ORGANIC FARM IS WORTH A VISIT TO SEE THE BEAUTIFUL PROTEA FLOWERS THAT ARE GROWN ON THE SIDE OF HALEAKALA. THEY ARE WONDERFUL GIFTS THAT

PERSONAL WAY TO SURPRISE FRIENDS AND LOVED ONES WITH AN *ORGANIC* FLORAL GIFT THEY WILL NEVER FORGET.

INLAND FROM PAIA IS ONE OF OUR FAVORITE PLACES—**MAKAWAO**. IT IS UP-COUNTRY WHERE YOU WILL SEE FARMS, HORSE RANCHES, COWBOYS AND BEAUTIFUL VIEWS OF THE MAUI COAST. THERE ARE ALSO MANY ART GALLERIES IN MAKAWAO. THE CLOSEST WEEKEND TO JULY 4TH IS THE MAKAWAO RODEO—THIS IS NOT TO BE MISSED! RIDERS FROM THE ISLANDS AND THE MAINLAND COMPETE AND EVERY LOCAL IN THE AREA ATTENDS THE RODEO. WE HAVE ENJOYED THIS EVENT SEVERAL TIMES.



THE MOST POPULAR RESTAURANT IN *MAKAWAO IS POLLI'S*. THEY SERVE THE BEST MEXICAN FOOD ON THE ISLAND, GREAT MARGUERITA'S, AND PLAY MOVIES MADE BY POLLI'S OWNER OF THE BRAVEST SOULS SURFING THE HUGE WAVES OFF MAUI'S SHORE AT A PLACE CALLED JAWS. THE MOVIES ALONE ARE WORTH THE STOP AT POLLI'S.



NOW GO AND ENJOY YOUR TIME ON MAUI. WE KNOW THAT IT WILL PASS ALL TOO QUICKLY. LET US KNOW IN THE COMMENT PAGES THAT FOLLOW OR BY EMAIL TO dstuffler@sbcglobal.net IF YOU FIND SOME GREAT PLACE THAT YOU WOULD LIKE TO SHARE WITH OUR VISITORS AND US OR ANY OTHER HELPFUL INFORMATION OR COMMENTS.

