

**ALOHA, WE WISH YOU A  
WONDERFUL STAY IN  
PARADISE!**



**RELAX AND ENJOY OUR  
BEAUTIFUL ISLAND!**



**PLEASE READ THE  
INFORMATION THAT  
FOLLOWS.**



# **WHAT IS QUIET TIME?**

**10:00 P.M. TO 8:00 A.M. IS QUIET TIME.**

**NO NOISE SHOULD BE HEARD OUTSIDE YOUR CONDO.**

**THERE SHOULD BE NO NOISE IN THE COMPLEX AREA THAT CAN BE HEARD INSIDE THE CONDOS.**

**IF YOU ARE DISTURBED, CALL THE ONSITE PROPERTY MANAGER KEN, ON HIS CELL PHONE AT (808) 250-6241 OR HIS OFFICE AT (808) 669-9007.**



## **WHERE IS IT OR HOW DOES IT WORK?**

### **LINENS**

**EXTRA LINENS ARE IN THE CLOSET BY THE FRONT DOOR.**

### **TELEVISIONS**

**THE LIVING ROOM TV IS AN HDTV. TO DATE, THERE ARE 3 CHANNELS ON MAUI BROADCASTING IN HIGH DEFINITION. YOU CAN ACCESS THEM BY GOING DOWN THE "CH" BUTTON FROM CHANNEL 2 ON THE VIZIO REMOTE. SINCE THE CABLE COMPANY CHANGES THE CHANNELS OFTEN, I CANNOT TELL YOU THE EXACT CHANNEL NUMBERS. THE VIZIO REMOTE "WIDE" BUTTON CHANGES THE PICTURE SIZE.**

**THE BEDROOM TV IS A STANDARD BROADCAST SYSTEM.**

**CHANNEL 12 IS THE TV GUIDE.**



## **VCR AND DVD**

**TO VIEW THE VCR, USE CHANNEL 3 ON THE VIZIO REMOTE CONTROL. TO VIEW THE DVD, YOU MUST REPEATEDLY PRESS THE “INPUT” BUTTON ON THE VIZIO REMOTE UNTIL AV2 IS HIGHLIGHTED. WHEN YOU FINISH WATCHING THE DVD, AGAIN REPEATEDLY PRESS THE “INPUT” BUTTON ON THE VIZIO REMOTE UNTIL TV IS HIGHLIGHTED.**

## **OTHER AUDIO EQUIPMENT**

**TO OPERATE THE RADIO, CD AND CASSETTE PLAYER, THERE IS NO REMOTE SO YOU WILL NEED TO PRESS THE BUTTONS ON THE UNIT. TO PLAY THE TV OR DVD SOUND THROUGH THE LARGE SPEAKERS, TURN ON THE AIWA POWER BUTTON, PRESS THE VIDEO BUTTON, AND ADJUST THE SOUND VOLUME AS NEEDED.**

## **AIR CONDITIONER**

**THE AIR CONDITIONER WILL ONLY COOL THE LIVING ROOM AREA. THE REMOTE SHOULD BE ON TOP OF THE AC UNIT OR NEAR THE TELEVISION.**



## **WASHER AND DRYER**

**THE WASHER AND DRYER ARE LOCATED IN THE SECOND BEDROOM CLOSET. PLEASE CLEAN THE LINT FILTER AFTER EACH USE. SINCE THE DRYER VENT IS CONNECTED TO THE BATHROOM VENT,**

***YOU MUST TURN ON THE BATH FAN WHEN USING THE DRYER***

## **LIGHT BULBS**

**THERE ARE REPLACEMENT LIGHT BULBS IN THE SECOND WHITE DRAWER NEXT TO THE WASHER/DRYER IN THE BEDROOM CLOSET.**

## **IRON AND IRONING BOARD**

**WE HOPE THAT YOU DON'T NEED TO USE THEM, BUT JUST IN CASE. THERE IS AN IRONING BOARD IN THE SECOND BEDROOM CLOSET. THE IRON IS IN THE THIRD WHITE DRAWER NEXT TO THE WASHER/DRYER.**



## **RAGS/CLEAN UP**

**IN CASE YOU HAVE A SPILL, THERE ARE RAGS AND OLD TOWELS IN THE FOURTH WHITE DRAWER NEXT TO THE WASHER/DRYER.**

## **BARBEQUES**

**GAS BBQ's ARE IN THE COMMON AREAS AND ARE FIRST COME FIRST SERVE. UTENSILS ARE IN THE KITCHEN DRAWER NEAR THE STOVE.**

## **CRITTERS**

**MAUI IS PARADISE, THERE ARE NO SNAKES, BUT LOTS OF FROGS AND THERE ARE SOME CRITTERS. THE CONDO COMPLEX HAS A PEST CONTROL COMPANY THAT REGULARLY SPRAY FOR CRITTERS. IF YOU SEE DEAD OR DYING ROACHES, PLEASE DON'T FRET, BUT SWEEP THEM AWAY. IF YOU SEE LIVE ROACHES, CONTACT PROPERTY MANAGER KEN, ON HIS CELL PHONE AT (808) 250-6241 OR HIS OFFICE AT (808) 669-9007. HE WILL HAVE THE PEST CONTROL RESPRAY OUR CONDO.**

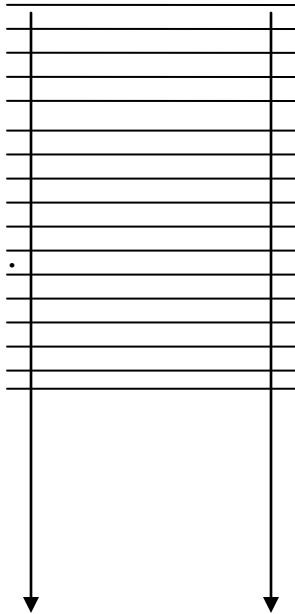
**SINCE THEY SPRAY EVERY FEW MONTHS, YOU MAY ARRIVE BE HERE JUST AFTER THEY HAVE SPRAYED OR THEY MAY COME DURING YOUR STAY. IF YOU SEE DEAD AND DYING CRITTERS, YOU PROBABLY ARRIVED SOON AFTER THE CONDO WAS SPRAYED.**

**FOR THE PESKY TINY MITES/ANTS THAT YOU SEE, USE THE BUG SPRAY UNDER THE KITCHEN SINK OR IN THE FRONT CLOSET.**

**ANTS ARE A PROBLEM ON MAUI. PLEASE DO NOT LEAVE ANY FOOD OPEN ON THE COUNTERS OR UNSEALED. PLASTIC CONTAINERS ARE IN CABINETS NEXT TO THE STOVE. ANT SPRAY IS UNDER THE SINK OR IN THE LIVING ROOM CLOSET.**



## HOW TO USE THE LIVING ROOM AND OUTSIDE SHADES



THE PULLS ON THE RIGHT SIDE OF THE SHADE CONTROL THE BOTTOM OF THE SHADE. IF YOU LOWER THE SHADE ALL THE WAY DOWN, YOU CAN THEN USE THE LEFT PULL TO LOWER THE TOP OF THE SHADE. THIS WILL LET THE BREEZE COOL THE ROOM AND YOU WILL STILL HAVE PRIVACY.

THE PULLS FOR THE OUTSIDE SOLAR SHADES ARE HOOKED ABOVE THE SLIDING GLASS DOOR. YOU WILL WANT TO USE THESE SHADES IN THE AFTERNOON TO HELP COOL THE CONDO.





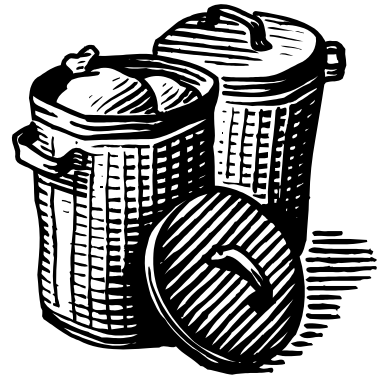
## **SOMETHING NEEDS FIXING?**

**WE HOPE THAT YOU FIND  
EVERYTHING WORKING  
PROPERLY IN THE CONDO.  
HOWEVER, SOMETIMES**

**THERE IS NO WAY TO KNOW THAT  
SOMETHING IS BROKEN OR THAT IT NEEDS  
REPAIR. PLEASE CONTACT DAVE SIEFKER  
AT MAUI BEACH PROPERTIES, 3600 LOWER  
HONOAPIILANI ROAD #H1, LAHIANA AT  
TELEPHONE NUMBER 808-669-7621 TO  
REPORT ANY PROBLEMS THAT MAY NEED  
IMMEDIATE ATTENTION.**

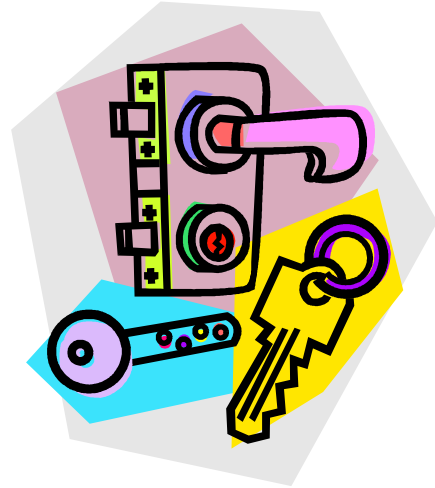
## **WHERE DOES THE TRASH GO?**

**PLASTIC TRASH BAGS ARE  
UNDER THE SINK. TRASH  
DISPOSAL AREAS ARE IN  
BOTH PARKING LOTS.**



**DO NOT PUT GARBAGE IN THE KITCHEN  
TRASH. PLEASE TAKE PERISHABLE FOOD TO  
THE TRASH WHEN YOU CHECK OUT.**

# HOW DO I LOCK UP?



**WHEN YOU LEAVE OR CHECK OUT, PLEASE CLOSE ALL THE JALOUSIE WINDOWS TO THE LOCKED POSITION.**

**PLACE THE DOOR LOCK ROD IN THE FLOOR TRACK OF THE SLIDING GLASS DOOR.**

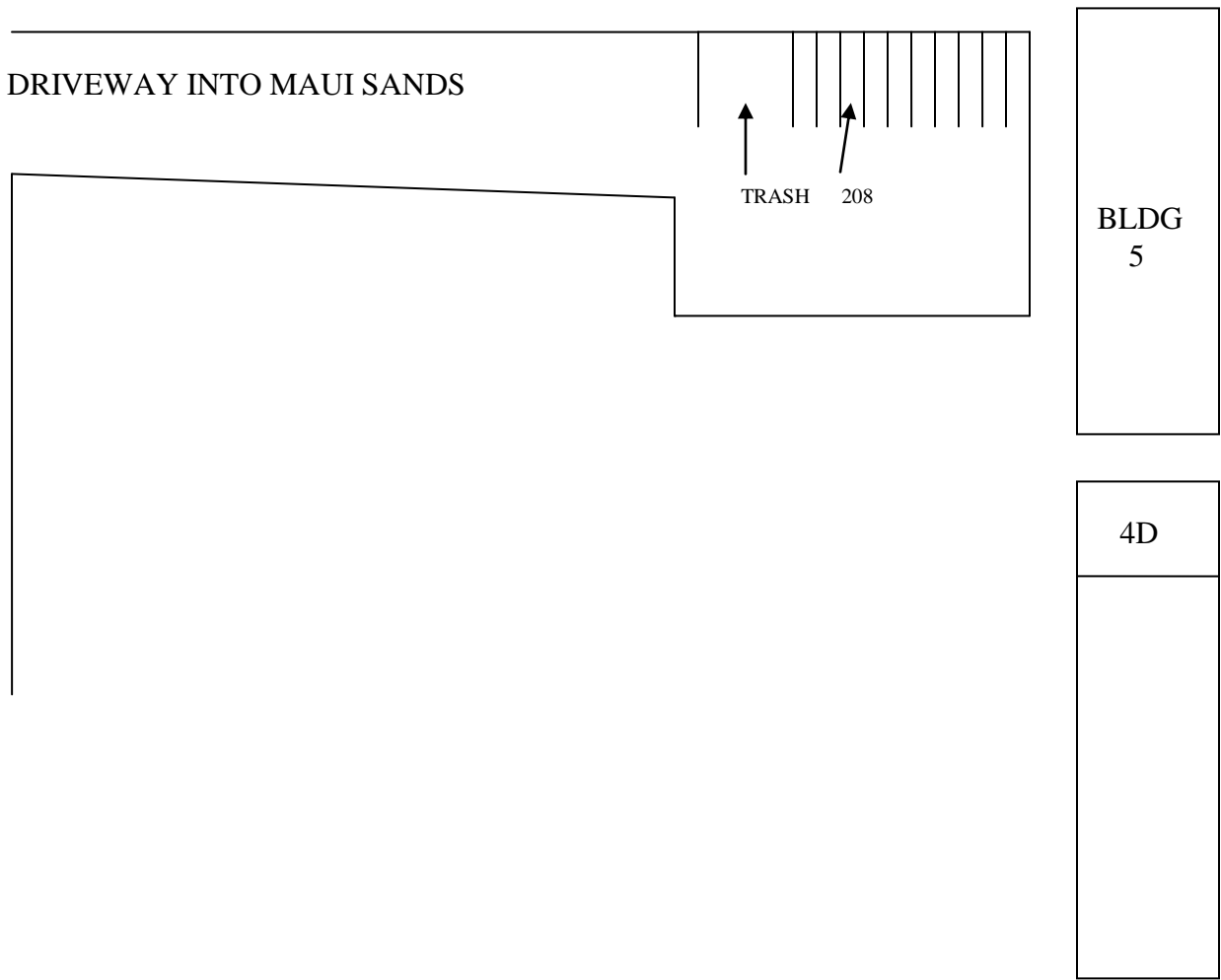
**LEAVE THE TWO KEYS ON DESK.**

**OPEN THE LOCK BOX ON THE FRONT DOOR, LOCK THE DOOR AND THE DEAD BOLT, THEN REPLACE THE KEY IN THE LOCK BOX.**

# YOUR MAUI SANDS PARKING SPOT

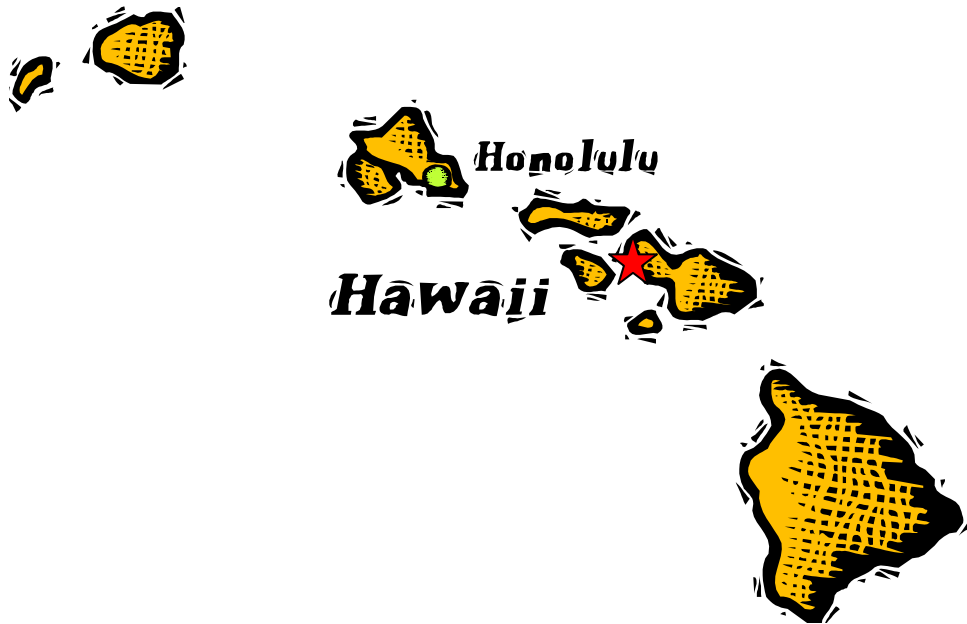


THE SIGN FOR OUR RESERVED PARKING SPOT READS “RESERVED FOR 208.” THIS IS YOUR ASSIGNED PARKING SPOT FOR OUR CONDO. IT IS LOCATED IN THE SOUTH PARKING LOT, THIRD SPOT FROM THE END AND UNDERNEATH THE BIG SHADE TREE.



**OKAY, NOW THAT WE HAVE YOU IN THE CONDO AND PARKED IN YOUR RESERVED SPOT, YOUR FIRST QUESTION SHOULD BE:**

## **WHAT AM I LOOKING AT?**



**YOU ARE CLOSE TO THE RED STAR WHICH IS LOCATED ON THE WEST SIDE OF MAUI ON THE MAP ABOVE. LOOKING OUT THE WINDOWS, YOU SEE LANAI TO THE LEFT AND STRAIGHT ACROSS THE CHANNEL IS MOLOKAI.**

**ON THE WAY HERE, YOU PASSED THE ISLAND OF KOOHOLAWA WHICH WAS USED AS A MILITARY ORDINANCE TESTING SITE DURING WORLD WAR II.**